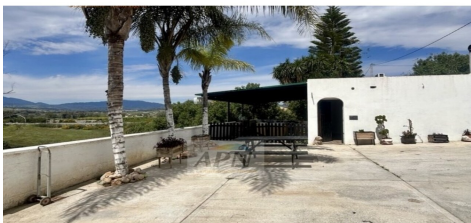


MLS24439H



Country House in Cartama

€325,000



3



3



97m²



2,514m²



N/A

Located in the peaceful countryside between Villafranco del Guadalhorce and Cártama, this well-positioned property offers privacy, accessibility, and excellent potential for rental or tourism use. With easy access to Málaga and the coast, it combines rural charm with convenience. The main house is a single-storey home set within a fully fenced and gated plot, featuring a good sized parking area. Inside, the property offers a spacious living room and kitchen, with patio doors leading out to a generous covered terrace perfect for relaxing while enjoying open countryside views. There are two double bedrooms with storage, a bathroom and a laundry room. Beneath the terrace, you'll find stables and additional storage space, along with...(Ask for More Details!)